



## 2021 NEW PRODUCTS

*April 2021*



*Made to Deliver*

A Leading ONE SOURCE Foodservice Supplier

## WOOD UNDERLINERS FOR CAST IRON



### FIREIRON™ CAST IRON WOOD UNDERLINERS

- ◆ Dual contoured handles for secure grip to safely transport hot skillets
- ◆ Protect table/countertop surfaces from heat damage
- ◆ Hand wash only



CASM-5TUL



CASM-4SUL



CASM-7OUL



CASM-6OUL



CAST-8UL



CAST-5UL

| ITEM      | DESCRIPTION                  | UOM  | CASE  |
|-----------|------------------------------|------|-------|
| CASM-4SUL | Fits CASM-4S, Square         | Each | 12/48 |
| CASM-5TUL | Fits CASM-5RT, Rectangle     | Each | 12/48 |
| CASM-6OUL | Fits CASM-6O, Oval           | Each | 12/48 |
| CASM-6RUL | Fits CASM-6R, Round          | Each | 12/48 |
| CASM-7OUL | Fits CASM-7O, Oval           | Each | 12/48 |
| CASM-7TUL | Fits CASM-7RT, Rectangle     | Each | 12/48 |
| CAST-5UL  | Fits CASM-5R & CAST-5, Round | Each | 12/48 |
| CAST-6UL  | Fits CAST-6, Round           | Each | 12/48 |
| CAST-8UL  | Fits CAST-8, Round           | Each | 12/48 |



CAST-4S with CASM-4SUL



CAST-6 with CAST-6UL

## PLATE COVERS



### POLYCARBONATE PLATE COVERS

*Whether serving indoors or out, we've got you covered!*

- ◆ Keep food hot and safe while serving
- ◆ Lids securely stack to hold up during transport
- ◆ Withstands temperatures up to 210°F (99°C)
- ◆ Clear cover for ease of viewing food
- ◆ Covers plates from 8" up to 12" in diameter
- ◆ Chip & break-resistant polycarbonate material
- ◆ Dishwasher safe

| ITEM    | DESCRIPTION | UOM  | CASE |
|---------|-------------|------|------|
| PPCR-8  | 8" Dia      | Each | 36   |
| PPCR-9  | 9" Dia      | Each | 36   |
| PPCR-10 | 10" Dia     | Each | 36   |
| PPCR-11 | 11" Dia     | Each | 36   |
| PPCR-12 | 12" Dia     | Each | 36   |



Secure stackability for transport



Upscale look but break-resistant, perfect for high-volume use

NSF PPCR-SERIES

New Item

**ALUMINUM SERVING TRAY - OPEN BEAD**

- ◆ Wide corners and open rim for easy cleaning

| ITEM      | DESCRIPTION      | GAUGE | UOM  | CASE |
|-----------|------------------|-------|------|------|
| ACVP-0608 | Alu Serving Tray | 14    | Each | 24   |

**ALUMINUM SERVING TRAY**



6" x 8"

ACVP-0608

**COUNTERTOP SAFETY SHIELDS**

All sizes are available solid or with pass-through window.

- ◆ Provides a clear, sanitary-positive barrier at point of sale
- ◆ Upholds friendly, face-to-face customer interaction
- ◆ Designed to stand on the countertop
- ◆ Lightweight for mobility
- ◆ Window opening: 12"W x 8"H
- ◆ Thickness: 6 mm

**COUNTERTOP SAFETY SHIELDS**



| ITEM       | DESCRIPTION                          | UOM  | CASE |
|------------|--------------------------------------|------|------|
| ACSS-2432  | 24"W x 32"H                          | Each | 1    |
| ACSS-2432W | 24"W x 32"H with Pass-Through Window | Each | 1    |
| ACSS-3632  | 36"W x 32"H                          | Each | 1    |
| ACSS-3632W | 36"W x 32"H with Pass-Through Window | Each | 1    |
| ACSS-4832  | 48"W x 32"H                          | Each | 1    |
| ACSS-4832W | 48"W x 32"H with Pass-Through Window | Each | 1    |



ACSS-2432



ACSS-2432W



12"W x 8"H pass-through window

ACSS-2432W



ACSS-3632



ACSS-3632W



14" wide sturdy supports



ACSS-4832



ACSS-4832W

## AUTOMATIC HAND-SANITIZER DISPENSERS

NEW



SDT-8K

SDT-8S

CE  
RoHS

### AUTOMATIC HAND-SANITIZER TABLE/COUNTERTOP DISPENSERS

- ◆ **Hands-free** dispensing reduces cross-contamination
- ◆ Compact, durable construction
- ◆ Holds up to 8 ounces of hand-sanitizer

| ITEM   | DESCRIPTION    | UOM  | CASE |
|--------|----------------|------|------|
| SDT-8K | Matte Black    | Each | 24   |
| SDT-8S | Brushed Nickel | Each | 24   |



4-level adjustable dispensing volume



Easy to operate and refill



4 AAA batteries required (not included)

## FACE SHIELD

NEW



PFS-1



1-1/8" thick comfortable foam padding



Compatible w/ glasses and face mask

### FACE SHIELD

Built to protect employees and customers from airborne contaminants.

- ◆ Provides a secure fit, with wide elastic headband to keep shield in place
- ◆ Extremely lightweight for long-lasting wear
- ◆ Thick foam padding for extra comfort
- ◆ Ultra-clear and anti-fog
- ◆ Compatible with safety glasses and/or other face masks

| ITEM  | DESCRIPTION  | UOM  | CASE  |
|-------|--------------|------|-------|
| PFS-1 | 13" x 8-1/2" | Each | 25/50 |

## METAL TENT SIGN

NEW



SGN-106

### "SANITIZED" TENT SIGN

Compact size is ideal for tabletops, to clearly indicate cleanliness to your guests

- ◆ Easy to see and read
- ◆ Durable stainless steel suitable for frequent use

| ITEM    | DESCRIPTION             | UOM  | CASE   |
|---------|-------------------------|------|--------|
| SGN-106 | 3"L x 1-1/2"D x 1-1/4"H | Each | 12/120 |

## FLOOR DECAL

NEW



PFD-12Y

### "SOCIAL DISTANCING" ANTI-SLIP FLOOR DECAL

Enhances awareness of social distancing standards.

- ◆ Bright yellow backdrop, bold black text, and accompanying graphic help to draw attention
- ◆ Durable construction holds up in high traffic areas
- ◆ Adhesive back allows for easy placement on floors or other smooth, solid surfaces
- ◆ 10 pieces per pack

| ITEM    | DESCRIPTION | UOM  | CASE |
|---------|-------------|------|------|
| PFD-12Y | 12" Dia     | Pack | 48   |



## ALL-IN-ONE "OPEN" LED SIGN

Drive restaurant traffic with the one sign that says it all. Tailor this eye-catching sign to any combination of your message to broadcast your restaurant status and maximize customer attraction.

- ◆ Choose between 6 display messages
- ◆ Multiple light modes for optimal visibility
- ◆ Easy-press buttons illuminate messages individually or all together
- ◆ Bright, highly visible LED lettering grabs attention from up to 100ft away!
- ◆ 40" chain with 18" drop to hang on wall or window
- ◆ 10ft power adaptor cord attaches to bottom of sign and plugs into any standard wall outlet
- ◆ 110-240V, 50/60 Hz

| ITEM   | DESCRIPTION        | UOM  | CASE |
|--------|--------------------|------|------|
| LED-20 | 19" x 24, English  | Each | 1/5  |
| LED-21 | 19" x 24", Spanish | Each | 1/5  |



One-click illuminates messages individually or all together



10' power adaptor cord



Set "OPEN" to blink, scroll or remain static



40" chain with 18" drop



Full color packaging

## LED SIGNS



LED-20



LED-21

## "FACE MASK REQUIRED" WINDOW CLING

Clearly inform customers of proper safety protocols.

- ◆ Clear vinyl clings to window - no adhesive required
- ◆ Removes clean & reusable to reposition as needed on smooth surfaces
- ◆ Mounts to glass from inside facing out
- ◆ 2 pieces per pack

| ITEM   | DESCRIPTION        | UOM  | CASE  |
|--------|--------------------|------|-------|
| WC-811 | 8-1/2" x 11" Cling | Pack | 1/500 |

## WINDOW CLING



WC-811

## REUSABLE FACE MASKS NEW

**SIGNATURE CHEF**



M/L L/XL



Camouflage, Adjustable



Gray, Adjustable



White, Adjustable



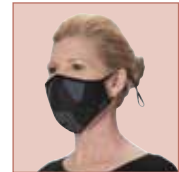
Black, Adjustable



## REUSABLE & ADJUSTABLE 2-PLY COTTON/POLY FACE MASKS

- ◆ Outer: 100% Polyester, Lining: 60/40 Cotton/Poly
- ◆ Machine washable
- ◆ Non-medical grade
- ◆ Comfort fit with contoured nose
- ◆ Adjustable soft elastic ear loops for lasting comfort

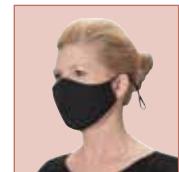
| ITEM      | COLOR | SIZE | UOM      | CASE   |
|-----------|-------|------|----------|--------|
| MSK-3ML   | Camo  | M/L  | 2 Pcs/Pk | 50/250 |
| MSK-3LXL  | Camo  | L/XL | 2 Pcs/Pk | 50/250 |
| MSK-4GML  | Gray  | M/L  | 2 Pcs/Pk | 50/250 |
| MSK-4GLXL | Gray  | L/XL | 2 Pcs/Pk | 50/250 |



## REUSABLE & ADJUSTABLE 2-PLY COTTON FACE MASKS

- ◆ 100% Cotton
- ◆ Machine washable
- ◆ Non-medical grade
- ◆ Comfort fit with contoured nose
- ◆ Adjustable soft elastic ear loops for lasting comfort

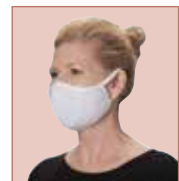
| ITEM      | COLOR | SIZE | UOM      | CASE   |
|-----------|-------|------|----------|--------|
| MSK-2WML  | White | M/L  | 2 Pcs/Pk | 50/250 |
| MSK-2WLXL | White | L/XL | 2 Pcs/Pk | 50/250 |
| MSK-2KML  | Black | M/L  | 2 Pcs/Pk | 50/250 |
| MSK-2KLXL | Black | L/XL | 2 Pcs/Pk | 50/250 |



## REUSABLE 2-PLY COTTON FACE MASKS

- ◆ 100% Cotton
- ◆ Machine washable
- ◆ Non-medical grade
- ◆ Comfort fit with contoured nose
- ◆ Soft elastic ear loops for lasting comfort

| ITEM      | COLOR | SIZE | UOM      | CASE   |
|-----------|-------|------|----------|--------|
| MSK-1WML  | White | M/L  | 2 Pcs/Pk | 50/250 |
| MSK-1WLXL | White | L/XL | 2 Pcs/Pk | 50/250 |
| MSK-1KML  | Black | M/L  | 2 Pcs/Pk | 50/250 |
| MSK-1KLXL | Black | L/XL | 2 Pcs/Pk | 50/250 |



## DISPOSABLE APRON

### DISPOSABLE APRON

Quickly slip on over clothing to protect from spills and splashes.

- ◆ White plastic, waterproof bib apron
- ◆ 1 mil standard weight
- ◆ Disposable for easy, mess-free clean up
- ◆ One size fits most

| ITEM      | DESCRIPTION          | SIZE      | UOM | CASE |
|-----------|----------------------|-----------|-----|------|
| BADP-2846 | Disposable Bib Apron | 28" x 46" | Box | 1/12 |



NEW



100 pieces per dispenser box

BADP-2846



## STANCHIONS & SIGN SET

Perfect for crowd control, restaurants, stores, casinos and more.

- ◆ Great for providing directions to customers
- ◆ 8-1/2" x 11" signs fit CGSF-series stanchion frames and works with CGS-series retractable belt stanchions
- ◆ The set includes:
  - (1) Easy to read two-sided preprinted sign, "Practice Social Distancing"
  - (1) Black frame to hold the sign and easily mounts to stanchion post
  - (2) 34"H black stanchions, each with weighted base and built-in 6-1/2 ft long black retractable belt



CGS-SETA

**NEW**

| ITEM     | DESCRIPTION   | UOM | CASE |
|----------|---------------|-----|------|
| CGS-SETA | Stanchion Set | Set | 1    |

## STANCHION FRAME SIGNS

- ◆ 2-sided pre-printed signs provide maximum visibility

| ITEM    | DESCRIPTION                | UOM  | CASE |
|---------|----------------------------|------|------|
| SGN-806 | Practice Social Distancing | Each | 6/36 |
| SGN-807 | Area Closed for Cleaning   | Each | 6/36 |



SGN-806



SGN-807

**NEW**

## UNIVERSAL WIPES CONTAINER STANCHION MOUNT

- ◆ Mount fits most stanchion posts & CGS-series stanchions
- ◆ Mount designed to secure the container in place
- ◆ Holder size: 5-1/2" Dia x 5-1/2" H
- ◆ Designed to hold a sanitizing wipes container

| ITEM    | DESCRIPTION                | UOM  | CASE |
|---------|----------------------------|------|------|
| SMWH-5K | Holder for Wipes Container | Each | 6    |



SMWH-5K

**NEW**

## STANCHION MOUNTS

### UNIVERSAL HAND SANITIZER & SOAP DISPENSER STANCHION MOUNT

- ◆ Mount fits most stanchion posts & CGS-series stanchions
- ◆ Accommodates most sanitizer dispensers, including automatic units
- ◆ Mount designed to secure the dispenser in place
- ◆ Mount plate size: 6-3/4"W x 16-1/2"H
- ◆ Drip tray size: 7-1/2"W x 7-1/2"D

| ITEM     | DESCRIPTION                                    | UOM  | CASE |
|----------|--|------|------|
| SMSD-16K | Holder for Universal Sanitizer/ Soap Dispenser | Each | 6    |



SMSD-16K

**NEW**

### UNIVERSAL JUG STANCHION MOUNT

- ◆ Mount fits most stanchion posts & CGS-series stanchions
- ◆ Accommodates 1 gallon jugs
- ◆ Mount designed to secure the jug in place
- ◆ Holder size: 7-1/4"W x 7-1/4"D

| ITEM    | DESCRIPTION             | UOM  | CASE |
|---------|-------------------------|------|------|
| SMJH-9K | Holder for 1 Gallon Jug | Each | 6    |



SMJH-9K

**NEW**

## DISPENSERS WITH HANDS-FREE FAUCETS



904



**NEW**  
New  
HANDS-FREE  
Faucet

### COLD BEVERAGE DISPENSER WITH ICE CORE & HANDS-FREE FAUCET

- ◆ Break-resistant, clear plastic container provides excellent product visibility
- ◆ Brushed finish stainless steel base, core and lid
- ◆ Tight-fitting lid keeps contents free from contaminants
- ◆ 9-1/8"L x 10"W x 22"H
- ◆ Detachable 8" high base

| ITEM  | DESCRIPTION                   | UOM  | CASE |
|-------|-------------------------------|------|------|
| 904   | 2.25 Gal (8.51L), Brushed S/S | Set  | 1/4  |
| 904-F | Hands-Free Faucet for 904     | Each | 30   |



**Cool & refreshing, not watered down**

Fill center tube with ice to chill drinks without watering them down



904-F

### PLASTIC BEVERAGE DISPENSER WITH HINGED LID & HANDS-FREE FAUCET

*The ideal choice when counter space is limited.*

- ◆ 3 gallon (11.3L) on 8" tall base
- ◆ PBD-3SK with hands-free faucet & hinged lid

| ITEM    | DESCRIPTION                   | UOM  | CASE |
|---------|-------------------------------|------|------|
| PBD-3SK | Sq Dispenser, Hands-Free      | Each | 4    |
| 904-F   | Hands-Free Faucet for PBD-3SK | Each | 30   |

**BPA FREE**

PBD-3SK

### PLASTIC BEVERAGE CONTAINER/DISPENSER WITH LID, HANDLE & HANDS-FREE FAUCET

- ◆ Hands-free, leak-proof faucet
- ◆ Secure snap-on lid
- ◆ Bail handle with comfortable handgrip for easy lifting
- ◆ Red graduations in liters and quarts
- ◆ Withstands temps from -40°F (-40°C) to 160°F (71°C)
- ◆ Dishwasher safe

| ITEM      | DESCRIPTION                   | UOM  | CASE |
|-----------|-------------------------------|------|------|
| PBDW-22   | 6 Gallons, (22.7L) PP         | Each | 1/4  |
| PBDW-HFFS | Hands-Free Faucet for PBDW-22 | Each | 1    |



PBDW-22

**NEW**  
New  
HANDS-FREE  
Faucet



PBDW-HFFS



Fill marks on container

**BPA FREE**

PBDW-SERIES



**TAPERED FIT VENTILATED CHEF JACKETS - WHITE OR BLACK**

- ◆ Cool mesh panels on back, sides and underarms
- ◆ Roll-up sleeves with one-button tab
- ◆ Left sleeve thermometer pocket
- ◆ 65/35 poly-cotton blend
- ◆ Available in white or black
- ◆ Color display box only available with full case (FC) qty

Refer to size chart at back of catalog

S M L XL 2X 3X

| ITEM       | COLOR | SIZE | UOM  | CASE  |
|------------|-------|------|------|-------|
| UNF-12WS   | White | S    | Each | 12/24 |
| UNF-12WM   | White | M    | Each | 12/24 |
| UNF-12WL   | White | L    | Each | 12/24 |
| UNF-12WXL  | White | XL   | Each | 12/24 |
| UNF-12WXXL | White | 2X   | Each | 12/24 |
| UNF-12W3XL | White | 3X   | Each | 12/24 |
| UNF-12KS   | Black | S    | Each | 12/24 |
| UNF-12KM   | Black | M    | Each | 12/24 |
| UNF-12KL   | Black | L    | Each | 12/24 |
| UNF-12KXL  | Black | XL   | Each | 12/24 |
| UNF-12KXXL | Black | 2X   | Each | 12/24 |
| UNF-12K3XL | Black | 3X   | Each | 12/24 |

**CHEF JACKETS**



**Wear sleeves long or rolled up**

Ventilated back, both sides and underarms

Individually packaged in printed poly-bag

Color box with full case purchase

**MEN'S TAPERED FIT CHEF JACKETS - NEW RED**

- ◆ Double breasted with thermometer/pen pocket
- ◆ 65/35 poly-cotton blend
- ◆ Available in red, white or black
- ◆ Color display box only available with full case (FC) qty

Refer to size chart at back of catalog

S M L XL 2X 3X 4X

| ITEM      | COLOR | SIZE | UOM  | CASE  |
|-----------|-------|------|------|-------|
| UNF-6RS   | Red   | S    | Each | 12/24 |
| UNF-6RM   | Red   | M    | Each | 12/24 |
| UNF-6RL   | Red   | L    | Each | 12/24 |
| UNF-6RXL  | Red   | XL   | Each | 12/24 |
| UNF-6RXXL | Red   | 2X   | Each | 12/24 |



**CARGO CHEF PANTS - BLACK**

- ◆ Solid black, universal fit
- ◆ Elastic drawstring waist
- ◆ Cargo pockets with velcro closure
- ◆ 65/35 poly-cotton blend
- ◆ Color display box only available with full case (FC) qty

Refer to size chart at back of catalog

XS S M L XL 2X 3X

| ITEM       | COLOR | SIZE | UOM  | CASE  |
|------------|-------|------|------|-------|
| UNF-11KXS  | Black | XS   | Each | 12/24 |
| UNF-11KS   | Black | S    | Each | 12/24 |
| UNF-11KM   | Black | M    | Each | 12/24 |
| UNF-11KL   | Black | L    | Each | 12/24 |
| UNF-11KXL  | Black | XL   | Each | 12/24 |
| UNF-11KXXL | Black | 2X   | Each | 12/24 |

Individually packaged in printed poly-bag

Color box with full case purchase



Cargo pockets with velcro closure



UNF-11KM

## PUMP DISPENSER WITH 3 CAPACITY RESTRICTORS

**NEW**



## PUMP DISPENSER WITH 3 RESTRICTORS SET

Dispense consistent amounts of hand sanitizer or hand soap, also great for condiments.

- ◆ Pump dispenser for 1 gallon jugs; tube can be cut to fit
- ◆ Restrictors easily snap onto dispensing tube; removable to adjust dispensing capacity
- ◆ Each restrictor is clearly marked with dispensing volume
- ◆ 1 oz, 3/4 oz, 1/2 oz, and 1/4 oz dispensing capacities

| ITEM  | DESCRIPTION                       | UOM | CASE  |
|-------|-----------------------------------|-----|-------|
| PKT-1 | 17" O.L., Fits 1-1/2" Dia Opening | Set | 12/72 |



Fits 1-1/2" diameter opening on a 1 gallon jug

## DIGITAL THERMOMETERS

**NEW**

AVAILABLE MAY 2021



NSF TMT-DG7

## THERMOCOUPLE THERMOMETER

- ◆ Temperature range: -40° - 572°F (-40° - 300°C)
- ◆ Backlit 1-1/2" LCD display and quick response times for fast temperature readings
- ◆ 4" long folding probe with 1.5mm step down
- ◆ Hold & Auto-off functions
- ◆ Field recalibratable

| ITEM    | DESCRIPTION              | UOM  | CASE  |
|---------|--------------------------|------|-------|
| TMT-DG7 | Thermocouple Thermometer | Each | 12/72 |

**NEW**

AVAILABLE MAY 2021



NSF TMT-WD2

## WATERPROOF FOLDING PROBE THERMOMETER

- ◆ Temperature range: -40° - 450°F (-40° - 232°C)
- ◆ Backlit 1-3/8" LCD display and quick response times for fast temperature readings
- ◆ 2-3/4" long folding probe with 1.5mm step down
- ◆ Auto-off function
- ◆ Magnetic back; lanyard included

| ITEM    | DESCRIPTION                          | UOM  | CASE  |
|---------|--------------------------------------|------|-------|
| TMT-WD2 | Waterproof Folding Probe Thermometer | Each | 12/96 |

**NEW**

AVAILABLE MAY 2021



NSF TMT-WD3

## WATERPROOF POCKET THERMOMETER

- ◆ Temperature range: -40° - 500°F (-40° - 260°C)
- ◆ Backlit 1" LCD display and quick response times for fast temperature readings
- ◆ 5" long folding probe with 1.5mm step down
- ◆ Min/Max memory, Hold & Auto-off functions
- ◆ Anti-microbial protective sleeve
- ◆ Field recalibratable

| ITEM    | DESCRIPTION                   | UOM  | CASE  |
|---------|-------------------------------|------|-------|
| TMT-WD3 | Waterproof Pocket Thermometer | Each | 12/72 |

### HINGED POLYCARBONATE FOOD PAN COVERS

Keep food in stainless steel or polycarbonate food pans safely covered with these hinged lids.

- ◆ Hinged design helps prevent cross-contamination
- ◆ Convenient notched design ensures easy access to serving spoons
- ◆ Stain, break, chip-resistant for long-lasting use
- ◆ Slotted opening fits serving spoon or ladle

| ITEM    | DESCRIPTION | PAN SIZE | UOM  | CASE  |
|---------|-------------|----------|------|-------|
| SP7200H | Hinged Lid  | 1/2-Size | Each | 12/48 |
| SP7300H | Hinged Lid  | 1/3-Size | Each | 12/48 |
| SP7600H | Hinged Lid  | 1/6-Size | Each | 12/48 |



Fit on steam table pans or food pans



### HINGED PC STEAM PAN/ FOOD PAN COVERS



SP7200H



SP7600H



SP7300H

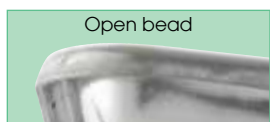
SP700H-SERIES



### 1/8" STAINLESS STEEL SHEET PANS - OPEN BEAD

- ◆ Easy-clean open bead rim
- ◆ Long lasting 20 gauge

| ITEM     | DESCRIPTION | SIZE      | GAUGE | UOM  | CASE |
|----------|-------------|-----------|-------|------|------|
| SXP-1318 | 1/2-Size    | 13" x 18" | 20    | Each | 6/12 |
| SXP-1622 | 2/3-Size    | 16" x 22" | 20    | Each | 6    |
| SXP-1826 | Full Size   | 18" x 26" | 20    | Each | 6    |



Open bead

### STAINLESS STEEL SHEET PANS



SXP-1826

SXP-SERIES



### HOBBY KNIFE & BLADES

An essential tool for delicate detail cutting and trimming marzipan, fondant, gum paste and more.

- ◆ Detail cut/trim marzipan, fondant, gum paste
- ◆ Textured grip aluminum, #11 fine-point blade, & safety cap
- ◆ Wipe clean

| ITEM  | DESCRIPTION                  | UOM  | CASE     |
|-------|------------------------------|------|----------|
| KH-6  | 5-3/4"L, with 5 Bonus Blades | Each | 12/144   |
| KH-5R | Replacement Blades 5pcs/pk   | Pack | 100/1000 |

### HOBBY KNIFE & BLADES



KH-6



KH-5R

### HEAVY-DUTY COVER FOR SHEET PAN/BUN RACKS

- ◆ Translucent white PVC cover protects contents from contaminants
- ◆ Full-length see-through PVC window for clear view
- ◆ Universal loading 4 corner zippers
- ◆ Clear side-load pocket holds slips or add custom labeling
- ◆ Fits most standard sheet pan racks

| ITEM       | DESCRIPTION                                    | UOM  | CASE |
|------------|--|------|------|
| ALRK-20-HC | Cover 23"W x 28"D x 62"H, Heavy-Duty, w/Window | Each | 1/12 |



Hanging loop



Add custom labeling

### HEAVY-DUTY COVER FOR SHEET PAN RACKS



Full-length zippers



ALRK-20-HC

# DELIVERY BAGS



## WINGO BAG™ PREMIUM CATERING BAGS

The delivery solution engineered for savings and functionality.

- ◆ High-performance insulation retains temperature
- ◆ Waterproof liner prevents leaking and is easy to clean
- ◆ Integrated reinforced bottom for stability
- ◆ Built-in rubber feet reduce wear and tear over time
- ◆ Moisture-resistant exterior prevents bacteria, mold, odors
- ◆ Clear pockets positioned for storing slips, menus, or to add custom branding
- ◆ Anchor strap to secure bag - ideal for bike and scooter delivery (*cord not included*)
- ◆ Reflector strip for safety
- ◆ Removable 12 compartment divider to keep beverages, soups and other liquids upright and organized (*divider comes with BGCB-1709 only*)



BGCB-1212 (S)



| ITEM      | DESCRIPTION                             | UOM  | CASE |
|-----------|---|------|------|
| BGCB-1212 | 12"W x 12"D x 12"H (S)                  | Each | 1/6  |
| BGCB-1709 | 17"W x 13"D x 9"H (M), Beverage Divider | Each | 1/6  |
| BGCB-2314 | 23"W x 15"D x 14"H (L)                  | Each | 1/4  |
| BGCB-2212 | 22"W x 22"D x 12"H (XL)                 | Each | 1/4  |



BGCB-1709 (M)



BGCB-2314 (L)



BGCB-1212



BGCB-2212 (XL)



BGCB-1709



## WINGO BAG™ PREMIUM BACKPACK

*Delivery on the GO with ease and comfort.*

- ◆ High-performance insulation retains temperature
- ◆ Adjustable contoured straps and padded back, ideal for bike and scooter delivery
- ◆ Waterproof liner prevents leaking and is easy to clean
- ◆ Integrated reinforcements for lightweight bag stability
- ◆ Dual close zipper and buckle to keep contents secure
- ◆ Clear pocket with zipper closure for storing slips, menus, or to add custom branding
- ◆ Built-in rubber feet reduce wear and tear over time
- ◆ Moisture-resistant exterior prevents bacteria, mold, odors
- ◆ Reflector strip for safety
- ◆ Holds up to (8) medium-size containers

| ITEM      | DESCRIPTION        | UOM  | CASE |
|-----------|--------------------|------|------|
| BGDB-1616 | 16"W x 13"D x 16"H | Each | 1/4  |



## DELIVERY BAGS



BGDB-1616

Restaurant



Catering



Delivery



## WINGO BAG™ PREMIUM PIZZA BAGS

*Constructed from sturdy 3-layer fabric, maintains food temperature for longer without condensation buildup.*

- ◆ Breathable liner reduces condensation
- ◆ Insulated flaps help retain temperature
- ◆ Dual closure velcro and buckle to keep contents secure
- ◆ Multiple straps for secure hold and stability
- ◆ Hanging loop for storage/drying
- ◆ Clear pockets positioned for storing slips, menus, or to add custom branding
- ◆ Reflector strip for safety
- ◆ Pizza box capacities: (M) holds (4) 16" / (L) holds (3) 18"

| ITEM      | DESCRIPTION                   | UOM  | CASE |
|-----------|-------------------------------|------|------|
| BGPZ-1909 | 19"W x 19"D x 9"H (M)         | Each | 1/6  |
| BGPZ-2109 | 21-1/2"W x 21-1/2"D x 9"H (L) | Each | 1/6  |



BGPZ-1909 (M)

BGPZ-2109 (L)



BGPZ-1909



## ROUND CONTAINER BRACKET



WHW-6



## ROUND WIPES CANISTER BRACKET

- ◆ Made to fit round containers up to 5-1/4" diameter (not included)
- ◆ Easily mounts in accessible location

| ITEM                  | DESCRIPTION             | UOM  | CASE  |
|-----------------------|-------------------------|------|-------|
| WHW-6                 | Round Container Bracket | Each | 12/24 |
| <i>Replaces WHW-5</i> |                         |      |       |

## HEAVY-DUTY TRASH CANS

### HEAVY-DUTY TRASH CANS

- ◆ Lids sold separately

| ITEM    | DESCRIPTION | COLOR | UOM  | CASE |
|---------|-------------|-------|------|------|
| PTC-10G | 10 Gallon   | Gray  | Each | 1    |
| PTC-10W | 10 Gallon   | White | Each | 1    |
| PTC-20G | 20 Gallon   | Gray  | Each | 1    |
| PTC-20W | 20 Gallon   | White | Each | 1    |
| PTC-32G | 32 Gallon   | Gray  | Each | 1    |
| PTC-44G | 44 Gallon   | Gray  | Each | 1    |



PTC-10G



PTC-20G



Large easy-grip handles



Locking threads underneath can

### HEAVY-DUTY TRASH CAN LIDS



PTCL-20G

| ITEM     | DESCRIPTION     | COLOR | UOM  | CASE |
|----------|-----------------|-------|------|------|
| PTCL-10G | Lid for PTC-10G | Gray  | Each | 10   |
| PTCL-10W | Lid for PTC-10W | White | Each | 10   |
| PTCL-20G | Lid for PTC-20G | Gray  | Each | 10   |
| PTCL-20W | Lid for PTC-20W | White | Each | 10   |
| PTCL-32  | Lid for PTC-32G | Gray  | Each | 6    |
| PTCL-44  | Lid for PTC-44G | Gray  | Each | 6    |



CONTAINERS & LIDS

**PUR-CLEAN™ AUTOMATIC SOAP DISPENSERS**

- ◆ Touchless motion-sensor dispensing reduces cross-contamination
- ◆ 35 oz (1000ml) capacity
- ◆ Impact-resistant construction
- ◆ Liquid dispensers: use with liquid/gel soap or hand sanitizer
- ◆ Foam dispensers: use with foaming soap or hand sanitizer
- ◆ Wall mount

| ITEM    | DESCRIPTION   | UOM  | CASE |
|---------|---------------|------|------|
| SDAL-1K | Liquid, Black | Each | 12   |
| SDAL-1W | Liquid, White | Each | 12   |
| SDAF-1K | Foam, Black   | Each | 12   |
| SDAF-1W | Foam, White   | Each | 12   |



**PUR-CLEAN™ SOAP & TOWEL DISPENSERS**

**PUR-CLEAN™**



SDAL-1W  
SDAF-1W



SDAL-1K  
SDAF-1K



**PUR-CLEAN™ MANUAL SOAP DISPENSERS**

- ◆ Large-easy press bar to push with hand or elbow to dispense
- ◆ 35 oz (1000 ml) capacity
- ◆ Impact-resistant construction
- ◆ Liquid dispensers: use with liquid/gel soap or hand sanitizer
- ◆ Foam dispensers: use with foaming soap or hand sanitizer
- ◆ Wall mount

| ITEM    | DESCRIPTION   | UOM  | CASE |
|---------|---------------|------|------|
| SDML-1K | Liquid, Black | Each | 24   |
| SDML-1W | Liquid, White | Each | 24   |
| SDMF-1K | Foam, Black   | Each | 24   |
| SDMF-1W | Foam, White   | Each | 24   |



SDML-1W  
SDMF-1W



SDML-1K  
SDMF-1K



**PUR-CLEAN™ AUTO-CUT ROLL TOWEL DISPENSERS**

- ◆ Mechanical hands-free dispensing; slim profile
- ◆ Automatically cuts consistent 9" sheets with each pull
- ◆ Fits most types of 7-7/8" paper towel rolls
- ◆ Impact-resistant construction

| ITEM    | DESCRIPTION                | UOM  | CASE |
|---------|----------------------------|------|------|
| TDAC-8K | Black Hands-Free Dispenser | Each | 3    |
| TDAC-8W | White Hands-Free Dispenser | Each | 3    |



TDAC-8W



TDAC-8K

# SECURITY CAGES



AVAILABLE  
JUNE 2021



Locking bar secures door when closed.

NSF VCG-SERIES

Customize with Winco wire shelving and posts



Locking bar secures door when closed.

NSF VEXG-SERIES

- ◆ Withstands temperatures from -100°F to 500°F
- ◆ Heavy-gauge wire
- ◆ Reinforced wire ends and hinges, continuous bar wraps corners and across sides for optimal strength and security
- ◆ Secure locking mechanisms
- ◆ Easy to assemble - wider panels come pre-connected and ready to attach
- ◆ For use with casters: use with 63" high posts
- ◆ For non-mobile: use with 72" high posts
- ◆ *Shelves, posts, casters sold separately*

## CHROME-PLATED SECURITY CAGES

- ◆ 63" high panels at varying lengths and widths
- ◆ NSF listed for use in dry storage and heated environments

| ITEM     | DESCRIPTION        | UOM | CASE |
|----------|--------------------|-----|------|
| VCG-1836 | 18"W x 36"L x 63"H | Set | 1    |
| VCG-1848 | 18"W x 48"L x 63"H | Set | 1    |
| VCG-1860 | 18"W x 60"L x 63"H | Set | 1    |
| VCG-2436 | 24"W x 36"L x 63"H | Set | 1    |
| VCG-2448 | 24"W x 48"L x 63"H | Set | 1    |
| VCG-2460 | 24"W x 60"L x 63"H | Set | 1    |

Sets include 2 doors, 2 side panels, & 2-piece hinged back panel

Shown assembled with wire shelves and posts



Side panels secure to post with security screws



Pin on door locks into top and bottom shelves.



Wire hook-and-loop wrap full length of side and back.



Triple-wire anti-pry reinforcement adjacent to thick locking bar.

Double-wire anti-pry reinforcement at corners.



Protective cover on exposed wire ends.



Frame clips into bottom shelf for secure and tight fit

## EPOXY-COATED SECURITY CAGES

- ◆ 63" high panels at varying lengths and widths
- ◆ NSF listed for use in all environments, including humid areas

| ITEM      | DESCRIPTION        | UOM | CASE |
|-----------|--------------------|-----|------|
| VEXG-1836 | 18"W x 36"L x 63"H | Set | 1    |
| VEXG-1848 | 18"W x 48"L x 63"H | Set | 1    |
| VEXG-1860 | 18"W x 60"L x 63"H | Set | 1    |
| VEXG-2436 | 24"W x 36"L x 63"H | Set | 1    |
| VEXG-2448 | 24"W x 48"L x 63"H | Set | 1    |
| VEXG-2460 | 24"W x 60"L x 63"H | Set | 1    |



### HEAVY-DUTY CAST IRON MEAT GRINDER

Winco manual meat grinders are economical and reliable tools for all your meat processing needs. Make your own sausages, burgers, or other processed ground meat favorites.

- ◆ Large 3" by 4" (76 x102 mm) hopper opening
- ◆ Heavy-duty cast iron construction with food safe tinned coating
- ◆ Durable cast iron grinding knife
- ◆ Easy cranking handle with heavy-duty nylon bearing for long life
- ◆ Two (2) grinding plates: medium grind 3/16"(4mm), coarse grind 5/16"(8mm)
- ◆ Sausage stuffing kit with three (3) stuffing tubes: 9/16"(14 mm), 3/4"(19 mm), & 15/16"(24 mm), stuffing star, and flange
- ◆ Clamp base easily secures to work tables or countertop
- ◆ Easy to clean and assemble (hand wash, not dishwasher safe)

## KATTEX™ MEAT GRINDER



MG-10

| ITEM  | OVERALL DIMENSIONS L" X D" X H" (mm) | SHIP WEIGHT      |
|-------|--------------------------------------|------------------|
| MG-10 | 10 x 4-1/4 x 8-7/8 (254 x 108 x 226) | 5.5 lbs (2.5 kg) |



| ITEM     | DESCRIPTION                                | UOM  | CASE |
|----------|--|------|------|
| MG-10    | Meat Grinder with Clamp Base               | Set  | 1/10 |
| MG-1018  | Grinder Plate, 1/8" (3mm)                  | Each | 100  |
| MG-10316 | Grinder Plate, 3/16" (4mm)                 | Each | 100  |
| MG-1014  | Grinder Plate, 1/4" (6mm)                  | Each | 100  |
| MG-10516 | Grinder Plate, 5/16" (8mm)                 | Each | 100  |
| MG-1038  | Grinder Plate, 3/8" (10mm)                 | Each | 100  |
| MG-10K   | Grinder Knife                              | Each | 100  |
| MG-10SSK | Sausage Stuffing Kit<br>1 Flange & 3 Tubes | Each | 100  |



### HEAVY-DUTY BURGER PATTY PRESS WITH INTERCHANGEABLE PLATES

Create uniform patties with the Kattex Heavy-Duty Burger Patty Press. With interchangeable plates and removal tool included, makes 4" (100mm) dia 1/4 lb patties or 5" (130mm) dia 1/2 lb patties.

- ◆ Heavy-duty anodized aluminum construction with stainless steel press bowls and press plates
- ◆ Manual single-lever operation for quick, easy press-and-release uniform patties
- ◆ Interchangeable 4" (100mm) and 5" (130mm) press plates
- ◆ Built-in patty paper holder
- ◆ Includes: 4"(100mm) and 5"(130mm) patty papers, 500 each

## KATTEX™ BURGER PATTY PRESS



HBP-3

| ITEM  | OVERALL DIMENSIONS L" X D" X H" (mm)  | SHIP WEIGHT       |
|-------|---------------------------------------|-------------------|
| HBP-3 | 10 x 9-1/2 x 12-3/4 (254 x 241 x 324) | 18.1 lbs (8.2 kg) |



| ITEM      | DESCRIPTION  | UOM | CASE |
|-----------|--|-----|------|
| HBP-3     | Hamburger Patty Press                                      | Set | 1    |
| HBP-PR100 | 4" (100mm) Perforated Round Case Patty Paper, Case of 5000 |     | 1/10 |
| HBP-PR130 | 5" (130mm) Perforated Round Case Patty Paper, Case of 5000 |     | 1/10 |



**winco**  
**SPECTRUM**  
 COUNTERTOP  
 CONVEYOR TOASTER



**CONVEYOR TOASTER**

The ideal choice for serving perfectly toasted breads, bagels, small pizzas and similar dough-based products. Easy-to-operate and can keep pace with even the busiest kitchens and buffets.

- ◆ Heavy-duty all stainless steel "Cool-Touch" exterior
- ◆ Large 2-1/2" high feeder opening with a 10-3/8" (2 slice) wide conveyor accepts over-sized bagels and Texas Toast
- ◆ Rounded, extra-wide curved return chute prevents larger foods items from getting caught
- ◆ Variable conveyor-speed dial control for optimal doneness
- ◆ Choose between independent or dual-heating elements for added flexibility
- ◆ Energy Saver-Hold mode saves up to 75 percent energy during slow periods when unit is not in use and allows quick recovery to temperature.
- ◆ Removable crumb tray
- ◆ Adjustable legs with non-skid foot add stability

| MODEL   | OVERALL DIMENSIONS<br>L" x D" x H" (mm)  | POWER                                     | PLUG                                 | SHIP WEIGHT            |
|---------|--|---|--------------------------------------|------------------------|
| ECT-300 | 14 <sup>7</sup> / <sub>8</sub> x 16 <sup>9</sup> / <sub>16</sub> x 16 <sup>3</sup> / <sub>8</sub><br>(370 x 420 x 415) | 120V~ 50/60Hz, 1800W, 15A                 | NEMA 5-15P<br>NEMA 5-20P<br>(Canada) | 44.5 lbs<br>(20.2 kgs) |
| ECT-700 |  | 208/240V~ 50/60Hz,<br>1800/2400W, 8.6/10A | NEMA 6-15P                           |                        |

| ITEM      | DESCRIPTION                 | UOM  | CASE |
|-----------|-----------------------------|------|------|
| ECT-300   | 300 Slices per Hour         | Set  | 1    |
| ECT-700   | 700 Slices per Hour         | Set  | 1    |
| ECT300-P8 | NEMA 5-20P Cord for ECT-300 | Each | 1    |

AVAILABLE  
JUNE 2021

NEW  
SIZE

ECT-300

**300  
OR  
700  
SLICES  
PER HOUR**



ECT-SERIES

**winco**  
**SPECTRUM**  
 IMPULSE BAG SEALER

**16" MANUAL IMPULSE BAG SEALER**

- ◆ Seals in 0.2 to 3 seconds
- ◆ Compatible with rolled, embossed, flat or zipper vacuum bags with a thickness up to 1/32"(0.5mm)
- ◆ Adjustable timer with indicator light lets you know when seal is ready
- ◆ No warm-up period for quick sealing any time
- ◆ Made of durable aluminum and iron

| ITEM       | OVERALL DIMENSIONS<br>L" X D" X H" (mm)   |                         | POWER                    | PLUG       | SHIP WEIGHT         |
|------------|---|-------------------------|--------------------------|------------|---------------------|
| EBS-400M   | 20 <sup>7</sup> / <sub>8</sub> x 3 <sup>5</sup> / <sub>8</sub> x 12<br>(530 x 92 x 305) |                         | 120V~50/60Hz, 480W, 4A   | NEMA 5-15P | 15 lbs<br>(6.8 kgs) |
| EBS-400M-I | SEAL BAR<br>15-3/4"<br>(400mm)  | SEAL WIRE<br>1/8" (3mm) | 220V~50/60Hz, 480W, 2.2A | CEE 7/7    |                     |

| ITEM       | DESCRIPTION                          | UOM | CASE |
|------------|--------------------------------------|-----|------|
| EBS-400M   | Impulse Bag Sealer                   | Set | 1/10 |
| EBS-400M-I | Impulse Bag Sealer,<br>International | Set | 1/10 |
| EBS-MP10   | Seal Wire                            |     |      |

NEW



CE

EBS-SERIES

Seal in the  
freshness

These commercial microwaves provide consistent results with frequent, repeated use, essential for quick-serve restaurants, concession stands, prep stations and more. Attractive, fully stainless steel interior and exterior units are reliable, sturdy and easy-to-clean.

## winco® SPECTRUM™ STAINLESS STEEL MICROWAVES

### TOUCH CONTROL MICROWAVES - 1800 & 2100 WATTS

- ◆ Stainless steel with glass door and lighted interior provides visibility during operation
- ◆ Large capacity 1.2 cubic feet (34L) accommodates a 14" (356mm) platter
- ◆ 5 power levels for consistent, delicious results
- ◆ Manual time and power option, plus 2X quantity button for multiple portions
- ◆ 10 pre-programmed cooking options, storing up to 100 cooking programs
- ◆ 3-stage cooking with one-touch programming

| ITEM       | OVERALL DIMENSIONS<br>L" x D" x H" (mm)   | POWER                      | PLUG       | SHIP<br>WEIGHT         |
|------------|---|----------------------------|------------|------------------------|
| EMW-1800AT | 22 <sup>1</sup> / <sub>8</sub> x 20 <sup>3</sup> / <sub>4</sub> x 14 <sup>1</sup> / <sub>2</sub><br>(574 x 526 x 368) | 208/230V-60Hz, 1800W, 8.6A | NEMA 6-20P | 75.6 lbs<br>(34.3 kgs) |
| EMW-2100BT |   | 208/230V-60Hz, 2100W, 10A  |            |                        |

| ITEM       | DESCRIPTION | UOM | CASE |
|------------|-------------|-----|------|
| EMW-1800AT | 1800 W      | Set | 1    |
| EMW-2100BT | 2100 W      | Set | 1    |

**NEW**

AVAILABLE  
JUNE 2021



Energy Verified  
Rendement  
Énergétique Vérifié



EMW-1800AT  
EMW-2100BT

### COUNTERTOP ELECTRIC GRIDDLES

Spectrum griddles have a wide heating range, from frying eggs on low to cooking burgers with high heat, all on the half-inch thick polished steel grill surface. Independent controls further regulate the heating zones. The extra-tall steel wall backsplash enclosure helps to minimize grease splatters.

- ◆ Solid 1/2" thick polished steel plate for fast heat up and high heat retention
- ◆ Heavy gauge stainless steel body with 3" high backsplash; sides taper back to front
- ◆ Large-volume removable grease drawer with weep hole and baffle
- ◆ Heavy duty, stainless steel adjustable legs for stability
- ◆ Compatible for 1-phase or 3-phase operation (field convertible EGD-24M & EGD-36M)
- ◆ 3-1/4" full width grease trough

| ITEM      | OVERALL DIMENSIONS<br>L" X D" X H" (mm)   | POWER   | PLUG                                 | SHIP<br>WEIGHT          |
|-----------|---|---|--------------------------------------|-------------------------|
| EGD-16M*  | 16 x 19 1/8 x 12 7/8<br>(406 x 486 x 327) | 120V 50/60 Hz 1750W 14.6A                                 | NEMA 5-15P<br>NEMA 5-20P<br>(Canada) | 53 lbs<br>(24 kgs)      |
| EGD-24M** | 24 x 21 3/4 x 12 7/8<br>(610 x 551 x 327) | 208/240V- 50/60 Hz,<br>4200/5600W, 20.2/23.4A,<br>1-phase | NEMA<br>L6-30P                       | 116.84 lbs<br>(53 kg)   |
| EGD-36M** | 36 x 21 3/4 x 12 7/8<br>(913 x 551 x 327) | 208/240V- 50/60 Hz,<br>6300/8400W, 30.29/35A,<br>1-phase  | Field-wired<br>by others             | 159.61 lbs<br>(72.4 kg) |

\*Cooking surface depth 15-1/8" (384mm)

\*\*Cooking surface depth 16-1/2" (419mm)

| ITEM     | DESCRIPTION                 | UOM  | CASE |
|----------|-----------------------------|------|------|
| EGD-16M  | 16" Griddle, 1 Heat Zone    | Set  | 1    |
| EGD-24M  | 24" Griddle, 2 Heat Zones   | Set  | 1    |
| EGD-36M  | 36" Griddle, 3 Heat Zones   | Set  | 1    |
| EGD-MP6  | Replacement Knob            | Each | 1    |
| EGD-MP19 | NEMA 5-20P cord for EGD-16M | Each | 1    |

## winco® SPECTRUM™ COUNTERTOP ELECTRIC GRIDDLES

**NEW  
SIZE**

EGD-16M



EGD-24M



EGD-36M

Adjustable legs



EGD-SERIES



# BENCH MARK USA™

## Concession Equipment and Supplies



2021 Winco Catalog - Countertop Equipment, pg 378-395

[www.wincous.com](http://www.wincous.com)



### HEADQUARTERS

65 Industrial Road, Lodi, NJ 07644

Phone: 1-888-946-2682

Fax: 1-973-916-9959

Email: [cs@wincous.com](mailto:cs@wincous.com)

### SHOWROOM

10800 NW 103rd Street,  
Bldg 22, Ste 11, Miami, FL 33178

Phone: 1-786-536-4656

Fax: 1-973-916-9959

Email: [cs@wincous.com](mailto:cs@wincous.com)

## 2021 NEW PRODUCTS

WINEW-NP



8 42169 14825 0

04/2021

Check your order status online at [www.wincous.com](http://www.wincous.com)